



## INFRASTRUCTURE & ENERGY

Q

What measures should the plan put in place to ensure needed physical infrastructure is in place to support people living and working in the county?

The plan must put in place a framework that promotes and provides **high-quality physical infrastructure** to allow development to progress in a sustainable manner. The availability of infrastructure such as **water, wastewater, surface water drainage, energy & telecommunication networks** will play a key role in **securing economic investment**. It will also contribute towards **attractive places to live** while **safeguarding our health and environment** through careful management of critical resources. This will also make us more resilient to climate change impacts. Such infrastructure must be provided in a

manner which ensures **compliance** with all relevant European, National and Regional **legislation and frameworks**. Transport and Community infrastructure are also critical to sustainable economies and communities and are discussed in the themes 'Sustainable Movement' and 'Community Infrastructure'.

While South Dublin County Council is not directly responsible for all aspects of infrastructure provision, the plan sets the **growth strategy** for the county which will guide the planning and location of **delivery of key infrastructure**.



## Surface Water

The management of surface water drainage in the County over the lifetime of the plan and beyond will be key to reducing surface water run-off both mitigating and adapting to climate change and flooding.

Measures such as **Sustainable Urban Drainage Systems (SuDS)**, which can include green roofs, permeable paving & attenuation areas contribute towards slowing surface water run-off, alleviating flooding and helping to clean the water before it reaches our rivers. Our Green Infrastructure network also has an important role to play in surface water management.



## Water & Wastewater

The provision of an **adequate supply of water** and **wastewater facilities** is crucial to facilitate and sustain the **growth** of the County.

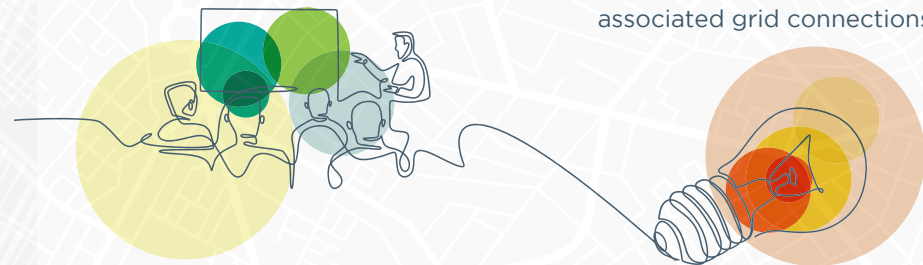
**Irish Water (IW)** have responsibility for the provision of water/wastewater infrastructure. SDCC will work with IW and the Regional Assembly to ensure that IW Investment Plan aligns with SDCC Settlement Strategy.

Much of our **wastewater** goes to Ringsend Treatment Plant. Planning permission has been granted to **upgrade** the plant to a capacity of 2.4 million population equivalent. This project is ongoing and is expected to be finalised in 2027.

There is an issue with **security of water supply** in the Dublin and Mid-East Regions. Irish Water are progressing a proposal to planning stage to abstract water from the lower Shannon. Subject to planning, the treated water will be piped to a new reservoir at **Peamount in South County Dublin**, connecting into the Greater Dublin network.

## Information and Communications Technology (ICT)

The widespread availability of a **high-quality** Information and Communications Technology **network** within the County will be **critical** to the **development** of the County's **economy** while also supporting **social development**. The Council is working with the NBP contractor (National Broadband Ireland) to plan for the delivery of high-speed broadband in South Dublin, 5% of all premises. The Council also works with telecommunication operators with their infrastructural investment.



## Energy Networks

**ESB Networks and EirGrid** are responsible for the electricity distribution and transmission system. **Gas Networks Ireland** are responsible for supply, transmission and distribution of natural gas. To reduce our **carbon footprint**, it is necessary to **diversify our energy** production systems away from fossil fuels and towards **green energy** such as wind, wave, solar and biomass. **Smart energy systems** and the conversion of the built environment into both generator/consumer of energy will also have a role to play. The **electrification of transport** fleets will require the progressive and strategic development of a different form of energy grid to reduce investment needs. One such way could be the **co-location** of renewables and associated grid connections.



## Waste Management

Waste Management is **integral** to **sustainable development**, protecting **public health** and maintaining a **high-quality environment**. Policy within the Development Plan will be shaped by the **Eastern and Midlands Region Waste Management Plan 2015 – 2021**. The overall vision of the Regional Waste Management Plan is to rethink the approach taken towards managing waste so that it is seen as a **valuable material**.

## Protection of Water

The County Development Plan will include objectives relating to mitigation and protection measures for all protected areas, including **Drinking Water Protected Areas** and associated Source Protection Plans. This is in line with the requirements of the Water Framework Directive and the current and future cycles of River Basin Management Plans.



**DELIVERY:** The provision of physical infrastructure is critical in order to secure economic investment and create sustainable communities Where people can enjoy a good quality of life.

Shape | Explore | Experience



South Dublin 2022-2028  
County Development Plan

